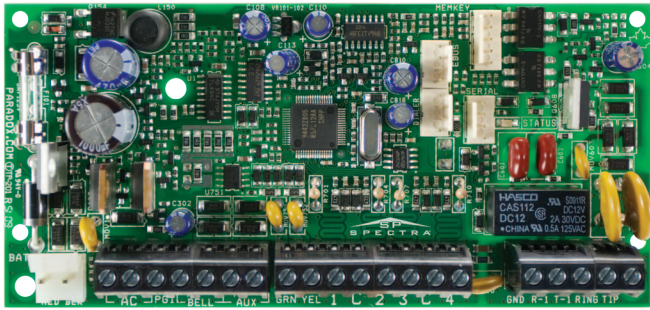


Spectra SP Series

4 to 32-Zone Expandable Security Systems



Description

Spectra SP control panels (SP4000, SP5500, SP6000, SP65, and SP7000) offer a combination of innovative features and an advanced communication bus for a uniquely expandable security system. Through its communication bus, all Spectra SP panels can be expanded via wireless and hardwired expansion modules and a variety of accessory modules. With their in-field firmware upgrade capability, the Spectra SP series allows installers to upgrade their system without hassle – quickly, easily, and on-site. To further facilitate installation, every Spectra SP panel can be configured using easy-to-follow, menu-driven programming.

Spectra SP also features multipath communication; this enables your system to communicate through multiple channels, including telephony with its built-in landline dialer, IP with the IP100 Internet Module, IP/GPRS/GSM with the PCS series module, and voice with the VDMP3 Plug-In Voice Module.

With its reliable communication technology, flexible expansion and user-friendly keypads, Spectra SP is the complete residential or commercial security solution.

Features

- Supports StayD mode
- 4-wire expansion bus
- Wireless expansion (via RTX3 / RX1)
- Expandable to 32 zones
- Expandable to 16 PGMs
- 2 partitions
- 32 user codes
- Supports PCS series modules
- Supports IP100 Internet Module
- Supports VDMP3 Plug-in Voice Module
- Supports REM3 Hand-held Remote Keypad
- Supports SR150 Wireless Siren
- Landline dialer (except SP65)
- In-field firmware upgradable

System Overview

Control Panels



SP6000

- SP4000: 4 to 32-Zone Control Panel
- SP5500: 5 to 32-Zone Control Panel
- SP6000: 8 to 32-Zone Control Panel
- SP65: 9 to 32-Zone Control Panel
- SP7000: 16 to 32-Zone Control Panel

PCS Series

Communicator Modules



- Report via IP (PCS300 only)
- Report via GPRS to IPR512 Monitoring Receiver
- Report via GSM (PCS200 only)
- Upload/download with WinLoad via GPRS
- Send and receive SMS messages

IP100

Internet Module



- IP reporting
- Send emails
- Control and monitor via web browser
- Connect directly to panel via 4-pin port

VDMP3

Plug-in Voice Module



- Send voice messages (5 phone numbers)
- Control and monitor via phone
- Mount on control panel or PCS module

Software & Accessories

- BabyWare: PC Software
- WinLoad: Installer Software
- InField: Firmware Upgrade Software
- PMC5: Memory Key
- 307USB: Direct Connect Interface
- HUB2: 2-Port HUB



Hardwired Keypads



TM50 Touch

- TM50 Touch: Intuitive Touchscreen
- K35: 32-Zone Fixed LCD Keypad
- K32: 32-Zone LED Keypad
- K10V: 10-Zone LED Keypad (Vertical)
- K10H: 10-Zone LED Keypad (Horizontal)
- K636: 10-Zone LED Keypad (1 Partition)

Zone & PGM Expansion Modules



RX1

- RX1: Wireless Receiver Module
- RTX3: Wireless Expansion Module
- ZX8: 8-Zone Expansion Module
- ZX8SP: 8-Zone Expansion Module
- PGM4: 4-PGM Expansion Module

Wireless Keypads & Remotes



K37

- K37: 32-Zone Wireless Fixed LCD Keypad
- K32RF: 32-Zone Wireless LED Keypad



REM15

- REM15: Magellan Remote Control with Backlit Buttons
- REM3: Hand-Held Two-Way Remote Keypad
- REM2: Magellan Two-way Remote Control with Backlit Buttons
- REM1: Magellan Remote Control with Backlit Buttons



SR150

- SR150: Wireless Siren with Built-in Strobe

Feature Details



Internet Communication (IP100)

The IP100 Internet Module allows you to control and monitor your security system remotely through any web browser. It allows for email notifications of important system events such as alarms, arm/disarm events, and troubles. For example, receive an email at work when your kids get back from school. Also, view the live status of your system and arm/disarm it. For instance, you have just left your office for the weekend but are unsure whether you armed the system. Simply check the status of your system from a laptop and arm it.



Wireless Communication (PCS Series)

The PCS series modules provide the Spectra SP control panels with wireless communication capabilities to report system events via IP, GPRS, and/or GSM. Whether it be uploading/downloading via IP or GPRS, receiving system status and events by voice or text message, or reporting to the monitoring station via IP, GPRS, or GSM, the PCS series enhances the communication capabilities of any Spectra SP installation.



Voice Communication (VDMP3)

The VDMP3 is a plug-in, voice-assisted module that can be programmed to call up to five telephone numbers in the event of an alarm. For example, when an alarm occurs at your store during off-hours, every employee can receive notification via telephone. You can also call the VDMP3 from an outside line, enabling you to arm or disarm the system as well as activate PGMs. The VDMP3 essentially turns any outside telephone into a keypad. The VDMP3 is easy to install; plug it in directly onto the panel, set the phone numbers, and select the activation event.



StayD

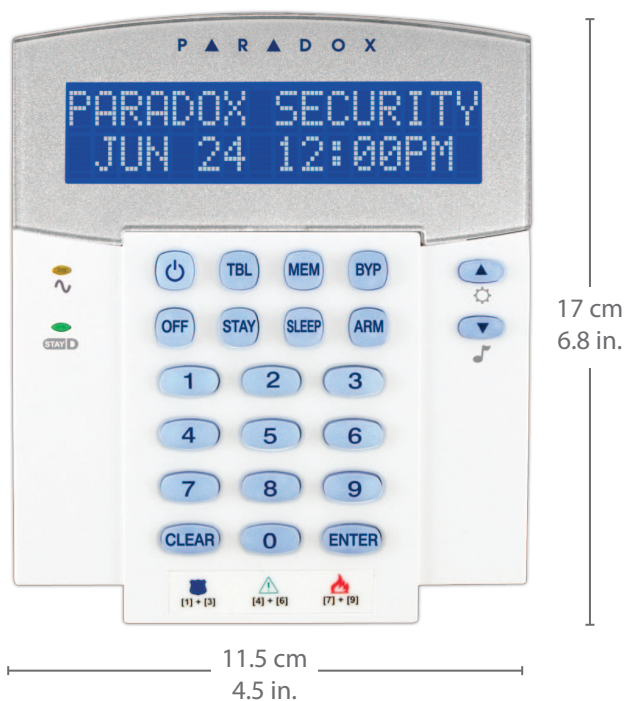
StayD resolves all issues with common security systems and represents the only solution for secure living. The revolutionary StayD feature represents a completely reversed philosophy compared to all other security systems made today. Traditional systems share the same principle - in order to provide security, users must remember to arm the system; otherwise the system is disarmed and does not provide security. A StayD system is always armed, and needs only to be partly disarmed when an entry or exit is needed. With StayD, you can truly have peace of mind knowing, that you are always protected.



In-field Upgradable

Spectra SP is not only easy to install, but is also fully in-field upgradable, allowing for simple on-site updates. The process is effortless; connect the PC to the panel and you are a few clicks away from performing a complete system upgrade within minutes. No need to change panels or hardware; all the updates are performed using Paradox's InField Firmware Upgrade Software.

Keypad Overview



K32LCD: 32-Character Hardwired LCD Keypad

- ## 32-Character LCD Display

The K32LCD provides the installer and end-user with easy-to-read menu-driven programming for simple system setup. The display also features adjustable backlight, contrast, and scroll speed.

- ## StayD Status Light

Instantly tells you whether or not your system is armed in StayD. StayD ensures that you are getting the highest level of protection.

- ## One-touch Button Activation

Spectra SP makes controlling your system easy. Arm, bypass, or even activate light switches and garage doors, all with the touch of a single button.

- ## Panic Signal Monitoring

Simply press two buttons simultaneously to send one of three panic signals to a monitoring station. This ensures assistance in case of fire, medical emergency, or security breach.

Specifications

On-board zones: SP4000 = 4 ; SP5500 = 5 ; SP6000 = 8 ; SP65 = 9 ; SP7000 = 16	Landline connections (except SP65)
AC input (16 Vac transformer w/ min. 20 VA rating (Rec. 40 VA), 50 to 60 Hz)	Status and charge LED
Backup battery (12 Vdc, 4 Ah / 7 Ah)	Service keypad port: for installer system programming
1.1A switching power supply	Reset button: reset the panel to default and restart
Auxiliary output (600 mA typical, 700 mA maximum, fuseless shutdown @ 1.1A)	Dialer and E-Bus ports (for PCS Series module and VDMP3 Plug-in Voice module)
Bell output (1A, fuseless shutdown @ 3A)	Serial port (for IP100 / 307USB)
On-board PGMs: SP4000 = 1 / SP5500 = 2 / SP6000 = 2 (+2 optional) / SP65 = 3 / SP7000 = 4 (100 mA low-current output - each PGM)	Memory key port (for PMC5)
PGM +/- Trigger (SP6000 / SP7000 only)	4-Wire bus: supports 15 keypads, 1 RTX3, 1 RX1, and 3 ZX8 / ZX8SP (15 modules total)
Relay Output: SP6000 = optional / SP7000 = one relay (5A/28 Vdc N.O. / N.C. for each relay)	256 events buffered